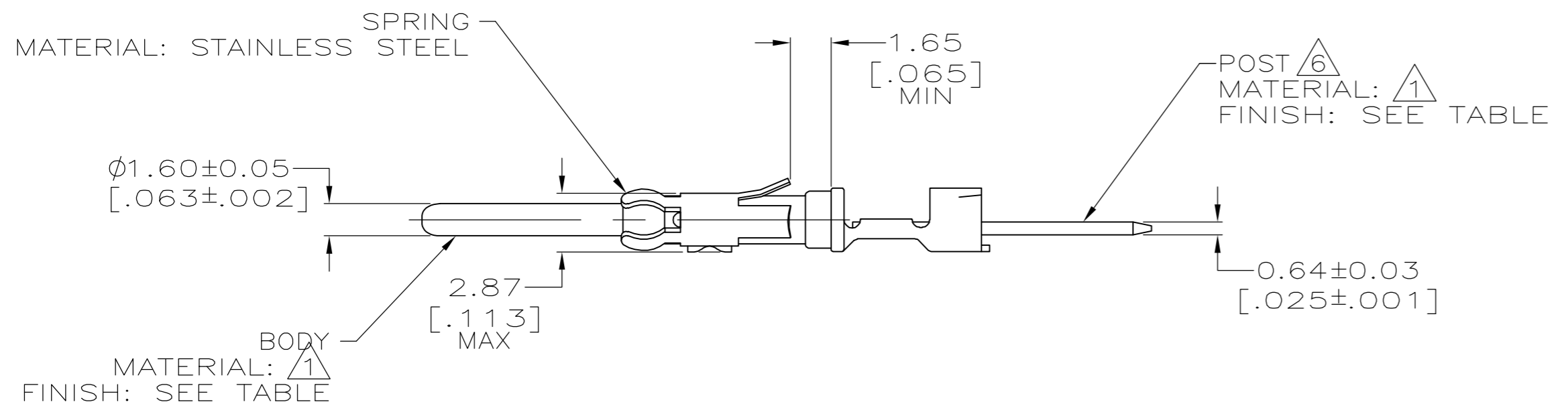
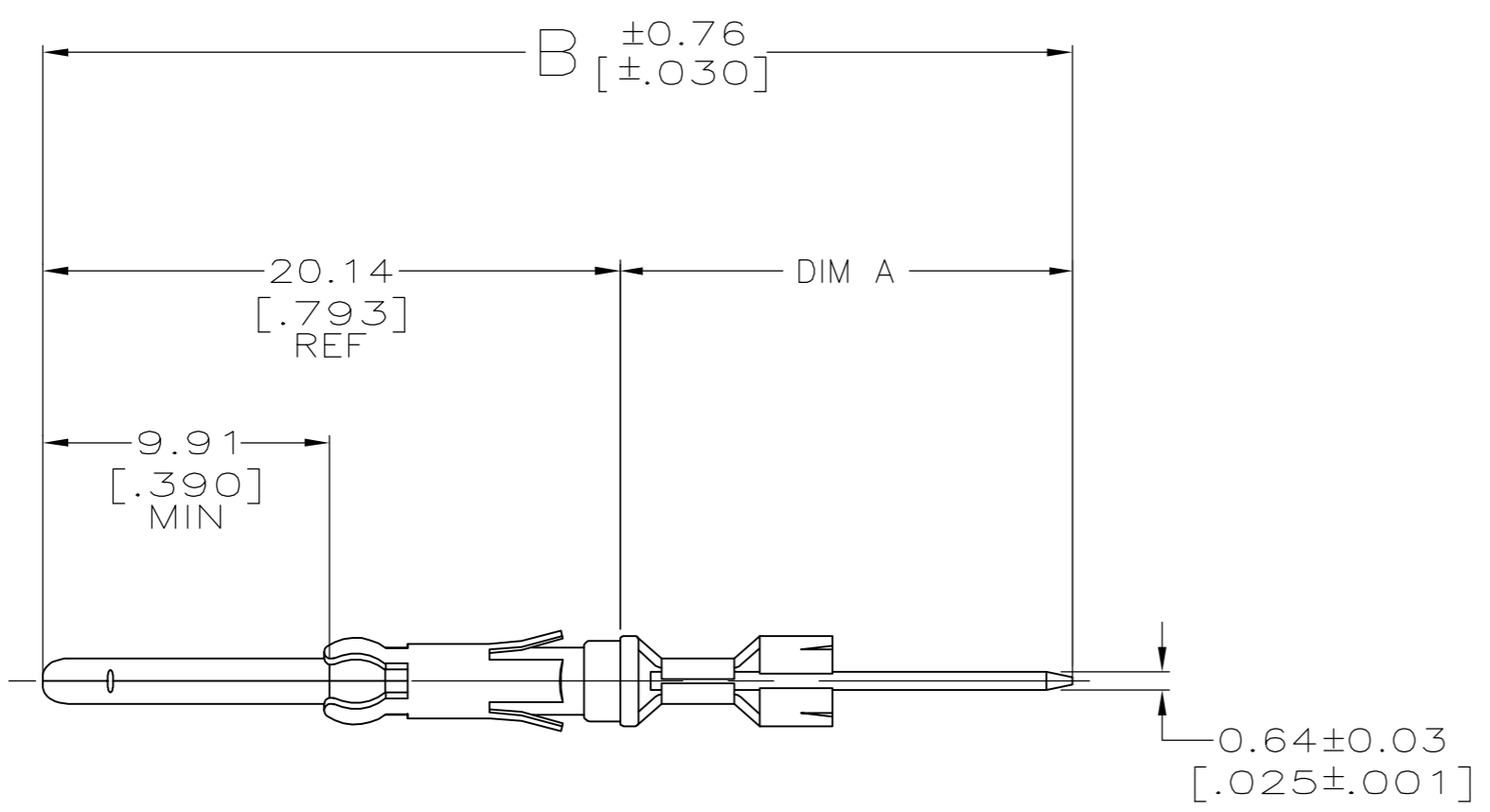


THIS DRAWING IS UNPUBLISHED. RELEASED FOR PUBLICATION  
 © COPYRIGHT BY TYCO ELECTRONICS CORPORATION. ALL RIGHTS RESERVED.

LOC	DIST	REVISIONS			
P	LTR	DESCRIPTION	DATE	DWN	APVD
FT	0	AR1	REVISE PER ECO-05-4929	7/18/05	SS GS



7	8		B	A	PART NUMBER
7	8	3	46.08 [1.814]	25.91 [1.020]	6-66460-6
7	8	1	35.97 [1.416]	15.80 [.622]	6-66460-5
7	4	3	46.08 [1.814]	25.91 [1.020]	6-66460-4
7	4	2	41.28 [1.625]	21.11 [.831]	6-66460-3
7	4	1	35.97 [1.416]	15.80 [.622]	6-66460-2
2	2	SPECIAL	33.40 [1.315]	13.23 [.521]	6-66460-1
2	3	SPECIAL	65.61 [2.583]	45.44 [1.789]	5-66460-0
2	3	SPECIAL	57.73 [2.273]	37.57 [1.479]	4-66460-9
2	3	SPECIAL	49.86 [1.963]	29.69 [1.169]	4-66460-8
2	3	SPECIAL	68.60 [2.701]	48.44 [1.907]	3-66460-0
2	3	SPECIAL	59.71 [2.351]	39.55 [1.557]	2-66460-9
2	3	SPECIAL	50.82 [2.001]	30.66 [1.207]	2-66460-8
2	4	1	34.80 [1.370]	14.63 [.576]	2-66460-1
2	4	-	34.77 [1.369]	14.63 [.576]	2-66460-0
2	4	SPECIAL	52.78 [2.078]	32.61 [1.284]	1-66460-9
2	5	2	41.28 [1.625]	21.11 [.831]	1-66460-8
2	4	2	41.28 [1.625]	21.11 [.831]	1-66460-1
2	4	SPECIAL	33.40 [1.315]	13.23 [.521]	1-66460-0
2	4	3	46.08 [1.814]	25.91 [1.020]	66460-9
2	4	2	41.28 [1.625]	21.11 [.831]	66460-8
2	4	1	35.97 [1.416]	15.80 [.622]	66460-7
2	3	3	46.08 [1.814]	25.91 [1.020]	66460-6
2	3	2	41.28 [1.625]	21.11 [.831]	66460-5
2	3	1	35.97 [1.416]	15.80 [.622]	66460-4
2	2	3	46.08 [1.814]	25.91 [1.020]	66460-3
2	2	2	41.28 [1.625]	21.11 [.831]	66460-2
2	2	1	35.97 [1.416]	15.80 [.622]	66460-1
POST FINISH	BODY FINISH	NO OF TERM	B	A	PART NUMBER

OBSOLETE

SUPERSEDED BY 66460-8

- 1 BRASS PER ASTM B-36.
- 2 2.54 μm [.000100] MIN TIN-LEAD OVER 1.27 μm [.000050] MIN NICKEL.
- 3 0.76 μm [.000030] MIN GOLD OVER 1.27 μm [.000050] MIN NICKEL.
- 4 SELECTIVELY PLATED 0.76 μm [.000030] MIN GOLD, FOR A DISTANCE OF 6.35 [.250] FROM MATING END, GOLD FLASH ON REMAINDER, ALL OVER 1.27 μm [.000050] MIN NICKEL.
- 5 SELECTIVELY PLATED 0.51 μm [.000020] MIN GOLD, FOR A DISTANCE OF 5.08 [.200] FROM MATING END, GOLD FLASH ON REMAINDER, ALL OVER 0.76 μm [.000030] MIN NICKEL.
- 6 POST WILL ACCEPT (SEE TABLE) TERMINATIONS.
- 7 POST PLATING .000100 MIN TIN OVER .000050 MIN NICKEL.
- 8 .0001000 TIN OVER .000050 NICKEL.

THIS DRAWING IS A CONTROLLED DOCUMENT.

DWN	C.REIFSNYDER	06 JUN 96	 Tyco Electronics Corporation Harrisburg, Pa 17105-3608
CHK	R.STONE	27 JUN 96	
APVD	G.A.STEINHAEUER	23 JUL 96	
NAME			
DIMENSIONS: INCHES	TOLERANCES UNLESS OTHERWISE SPECIFIED:	NAME PRODUCT SPEC APPLICATION SPEC WEIGHT CUSTOMER DRAWING	
0 PLC ± -	1 PLC ± -	SIZE CAGE CODE DRAWING NO RESTRICTED TO	
2 PLC ± 0.25 [.010]	3 PLC ± -	A2 00779 C=66460	
4 PLC ± -	ANGLES ± -	SCALE 4:1 SHEET 1 OF 2 REV AR1	
MATERIAL SEE CALLOUTS	FINISH SEE CALLOUTS		

THIS DRAWING IS UNPUBLISHED. RELEASED FOR PUBLICATION  
 © COPYRIGHT BY TYCO ELECTRONICS CORPORATION. ALL RIGHTS RESERVED.

LOC	DIST	REVISIONS			
P	LTR	DESCRIPTION	DATE	DWN	APVD
FT	0	SEE SHEET 1	-	-	-

		SPECIAL	33.40 [1.315]	13.23 [.521]	6-66460-8
		2	41.28 [1.625]	21.11 [.831]	6-66460-7
POST FINISH	BODY FINISH	NO OF TERM	B	A	PART NUMBER

THIS DRAWING IS A CONTROLLED DOCUMENT.		DWN C.REIFSNYDER 06 JUN 96	<b>tyco</b> Tyco Electronics Corporation <b>Electronics</b> Harrisburg, Pa 17105-3608		
DIMENSIONS: INCHES		CHK R.STONE 27 JUN 96	NAME G.A.STEINHAUER		
TOLERANCES UNLESS OTHERWISE SPECIFIED:		APVD G.A.STEINHAUER 23 JUL 96	PRODUCT SPEC -		
 0 PLC ± - 1 PLC ± - 2 PLC ± 0.25 [.010] 3 PLC ± - 4 PLC ± - ANGLES ± -		APPLICATION SPEC -		SIZE A2	CAGE CODE 00779
MATERIAL SEE CALLOUTS		FINISH SEE CALLOUTS	WEIGHT -	DRAWING NO C=66460	RESTRICTED TO -
CUSTOMER DRAWING			SCALE 4:1	SHEET 2 OF 2	REV AR1

66460